

Coronavirus: Recovery plan

Kishor Tailor
Humber LEP - CEO



Organisations across the Humber came together to support businesses and residents through the coronavirus pandemic.

In the first phase, the Humber emergency response was co-ordinated through two groups working closely together:

- The **Humber Local Resilience Forum (LRF)**, a multi-agency partnership made up of representatives from local public services, the emergency services, local authorities, the NHS, the Humber LEP, Environment Agency and others. It has been enabling a systematic, planned and co-ordinated approach to responding to all aspects of the Covid-19 response in the area, strengthening local resilience through multi agency collaboration.
- The **Humber Economic Resilience Group (HERG)**, convened by the Humber LEP and including business membership and support organisations and local authorities, co-ordinated the economic response. HERG helped more businesses find support and guidance, redirected local resources to help businesses most in need, and gathered intelligence on the economic impact of the crisis to share with local decision-makers and Government.

As part of this, HERG brought together OneHumber week – a programme of over 30 free events organised by 17 organisations at the beginning of June 2020 that enabled hundreds of businesses to come together and share knowledge to support them to rethink and rebuild together.

The Humber LEP also worked with partners to launch the Humber Jobs Fuse service, matching people with vacancies, and a support portal for businesses to offer help to the local emergency response – backed up by warehousing capacity donated by two local businesses.

The Humber Business Growth Hub kept local organisations up to date with 101 different identified sources of Government and local support, and informed Government of 276 issues raised by individual firms.

At the local level, in addition to their role in managing the public health emergency, Humber local authorities have so far distributed over £181m of Government grants to 16,000 businesses and – as partners in the Humber Business Growth Hub – were on the front line in responding to thousands of business enquiries.

Despite the unprecedented economic impact coronavirus had on our economy during this time, businesses across the Humber stepped forward to help the emergency response – donating PPE equipment and food to those most in need, innovating to rapidly manufacture new PPE equipment to address supply shortages, and working hard to support the communities they serve, including keeping essential businesses open.

This help from businesses complemented the exceptional work done by people in our local NHS and care services, local authorities, emergency services, military, charities and other organisations, together with countless individual volunteers, to keep us as safe as possible in extraordinary times.



196

offers to help with PPE and other key supplies via the LEP's portal



3,130

items of PPE donated via the central hub



3,000

Easter Eggs donated and distributed to key workers and food banks



10,607

enquiries handled by the Growth Hub



120

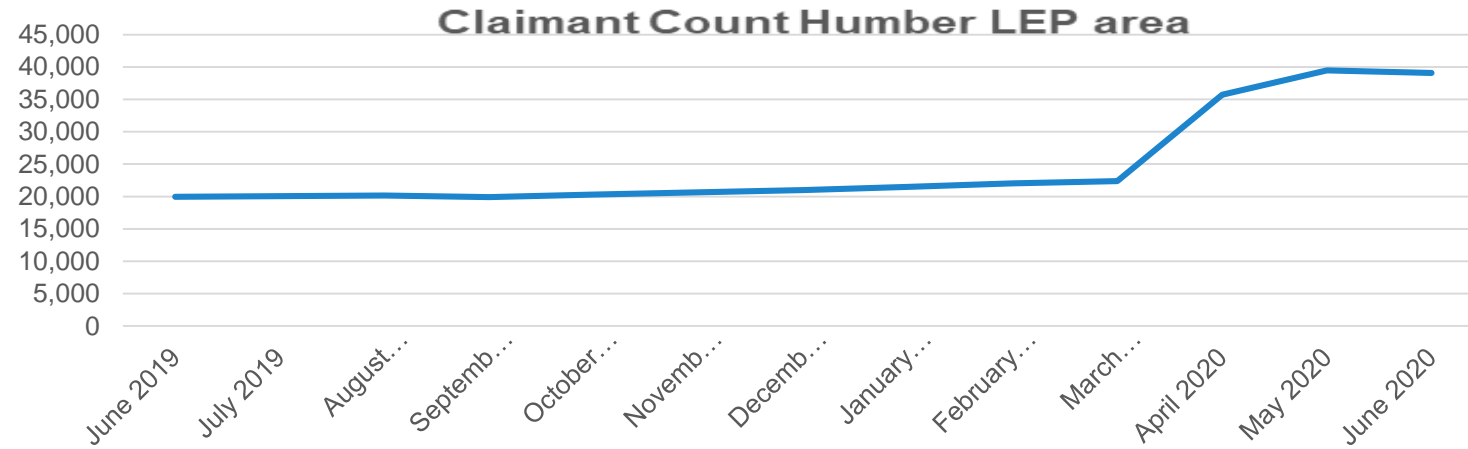
Growth Hub grants, worth £332,980, made to support SME home working



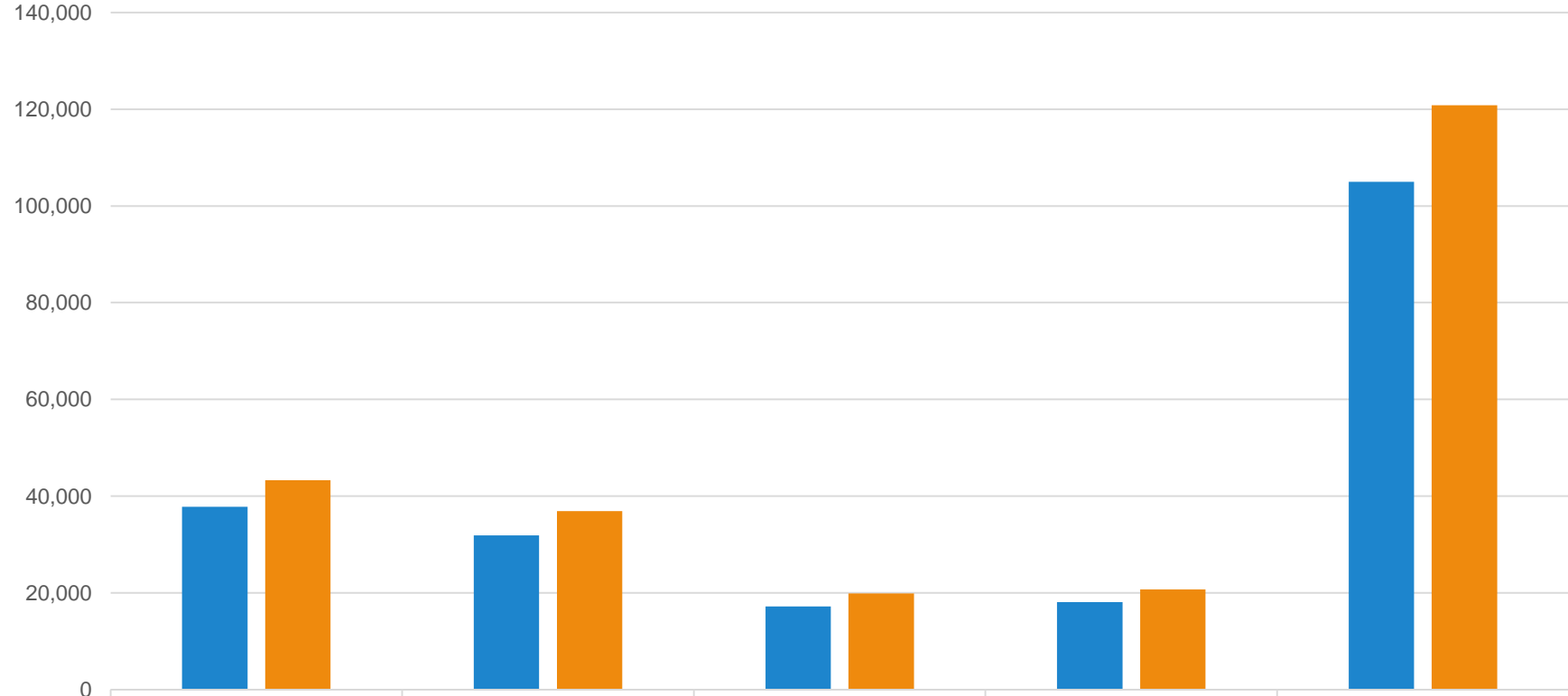
1,239

participants in 51 Growth Hub coronavirus recovery webinars

CLAIMANT COUNT



Job Retention Scheme Statistics

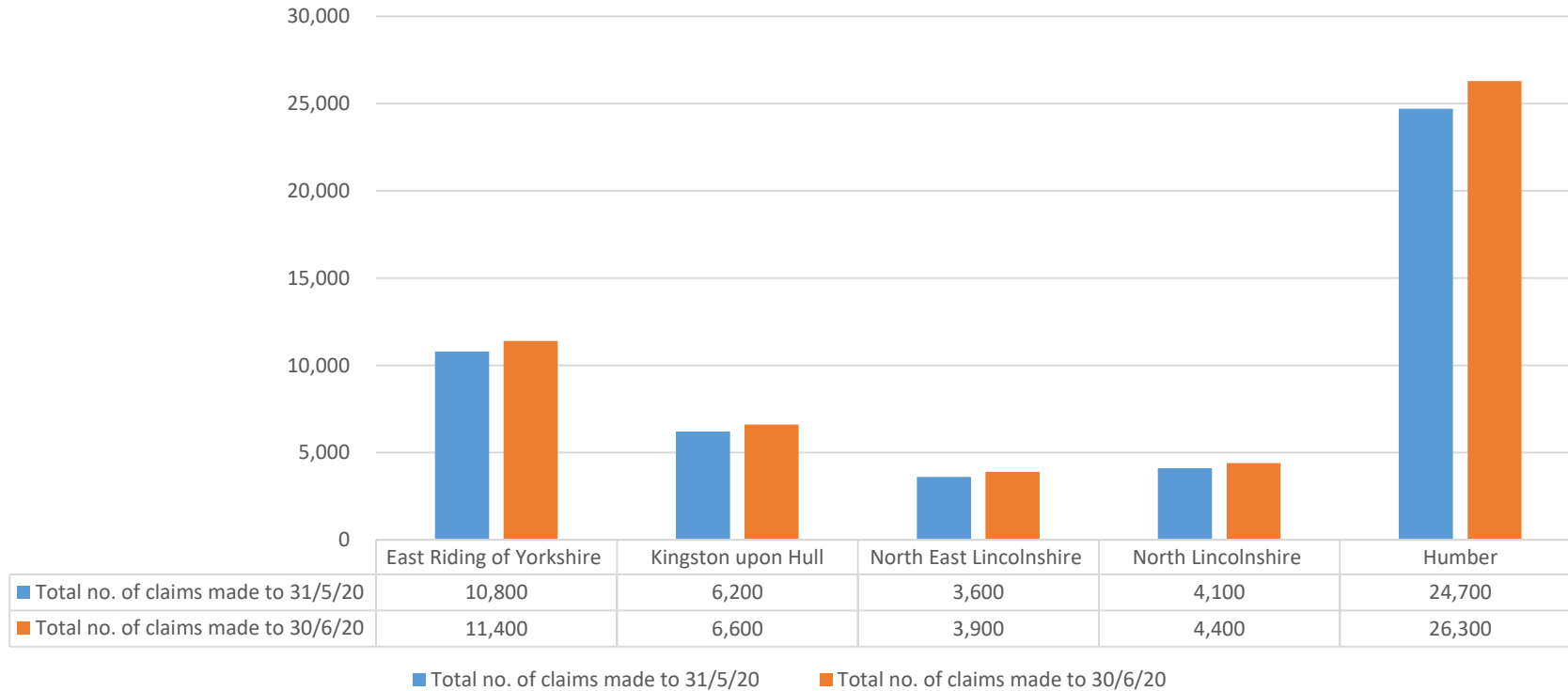


	East Riding of Yorkshire	Kingston upon Hull	North East Lincolnshire	North Lincolnshire	Humber
■ Employments Furloughed in May	37,800	31,900	17,200	18,100	105,000
■ Employments Furloughed in June	43,300	36,900	19,900	20,700	120,800

■ Employments Furloughed in May ■ Employments Furloughed in June

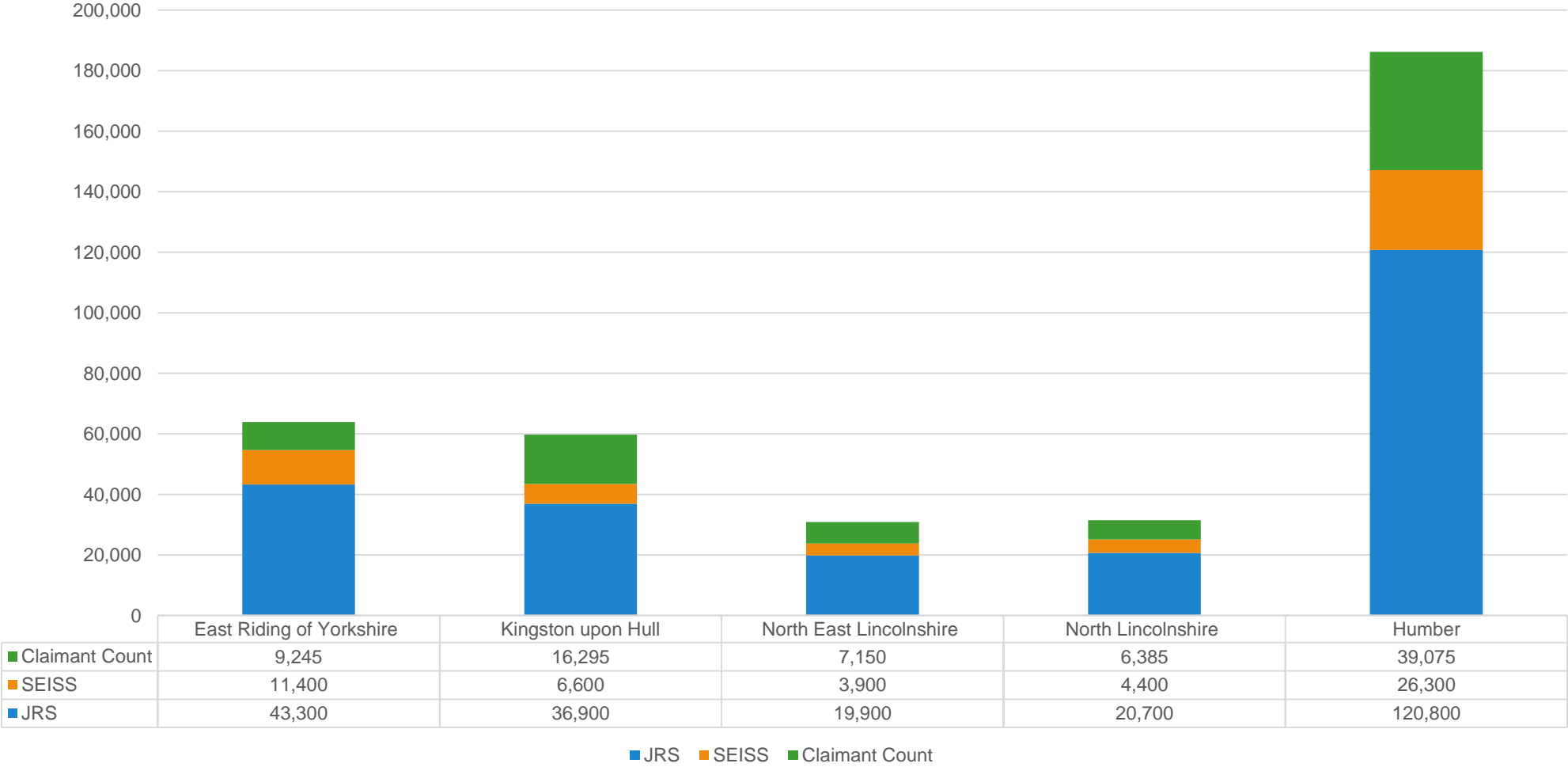
Self-employment Income Support Scheme

Self-employment Income Support Scheme Statistics

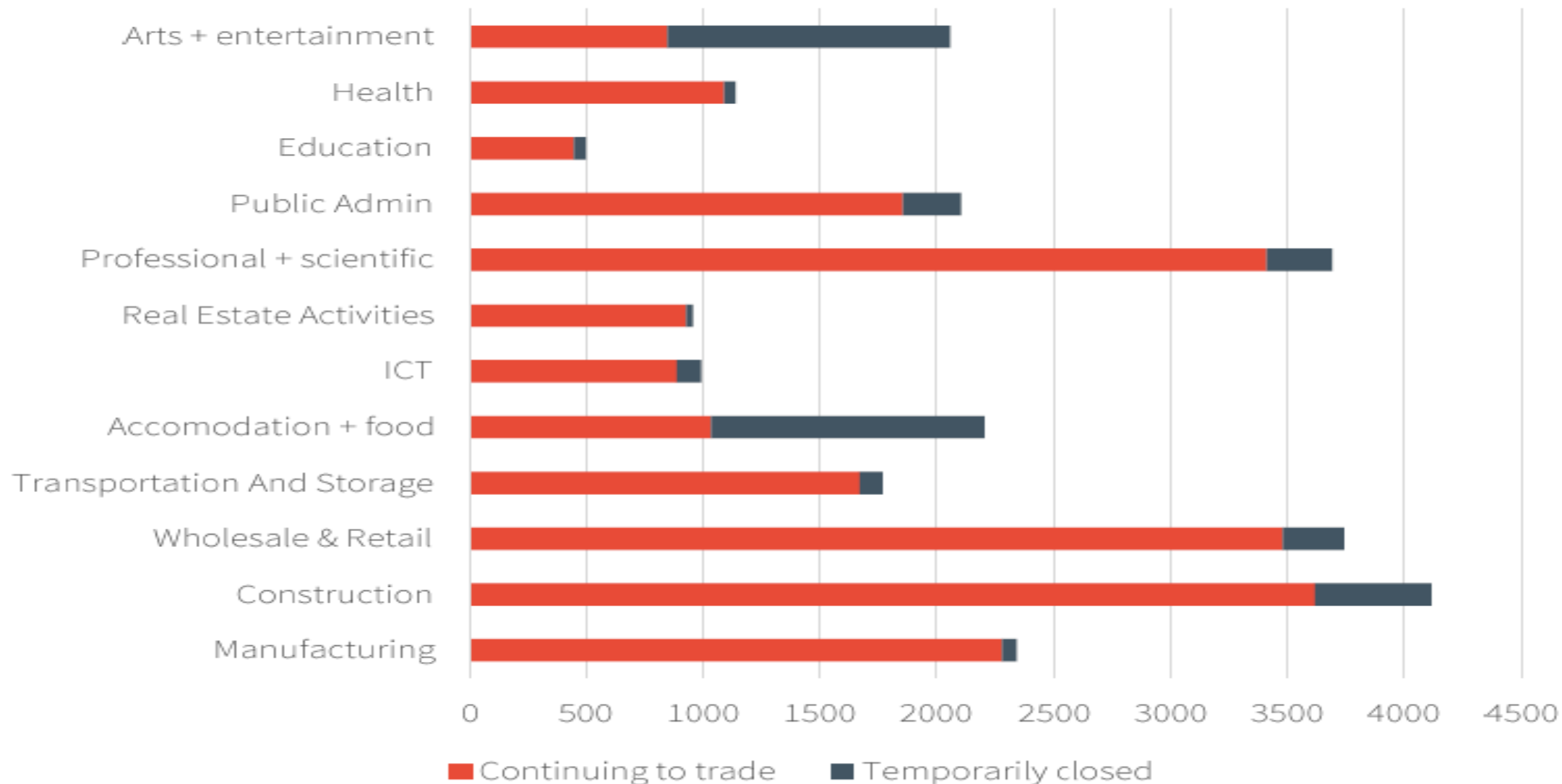


CLAIMANT COUNT JRS AND SEIS

Claimant Count JRS and SEISS



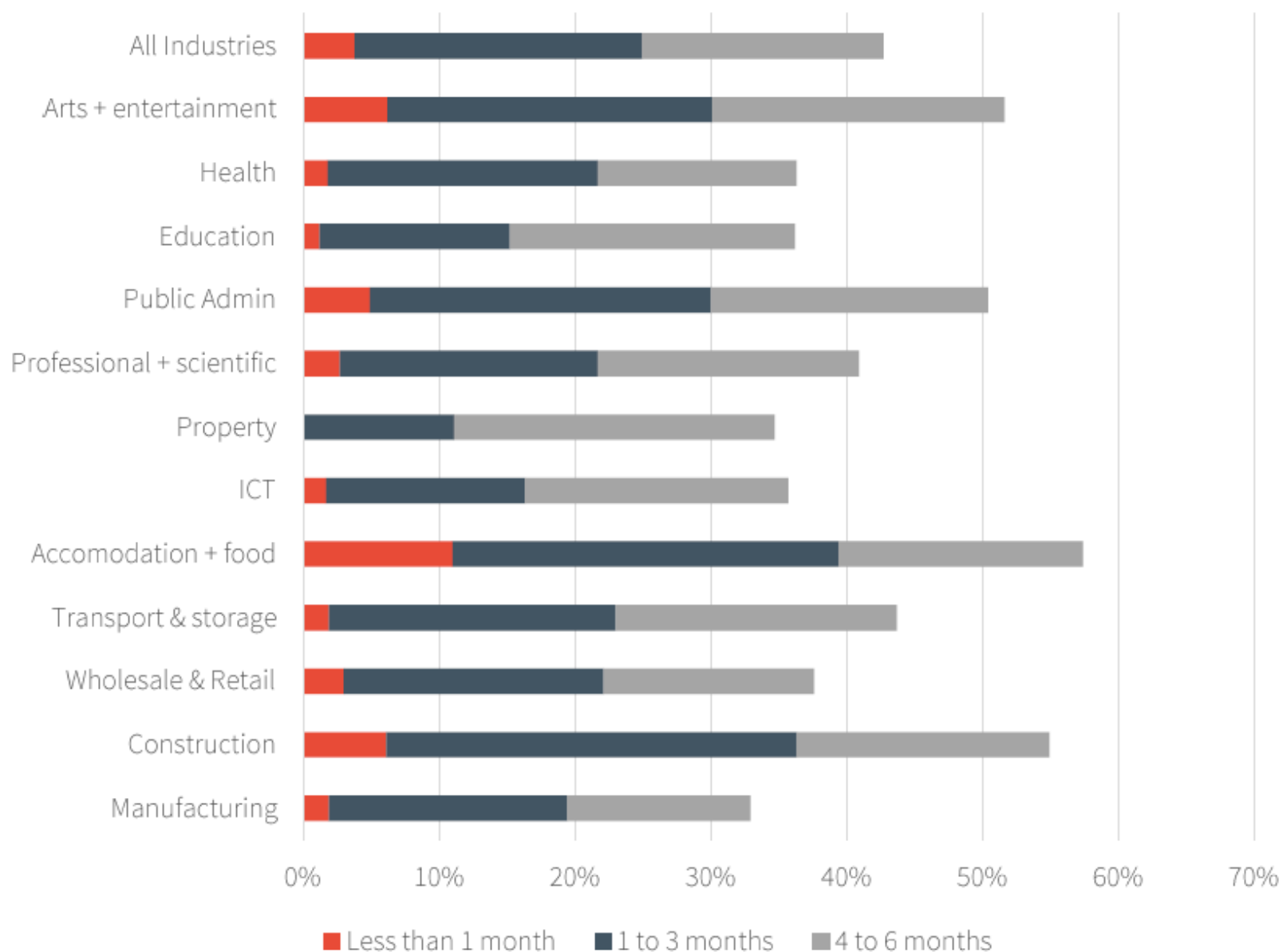
Estimated temporary closure of Humber businesses by sector (Total counts in Humber)



Source: ONS Business Impact of COVID-19 Survey (BICS) Wave 6, ONS Business Counts, Hatch Analysis

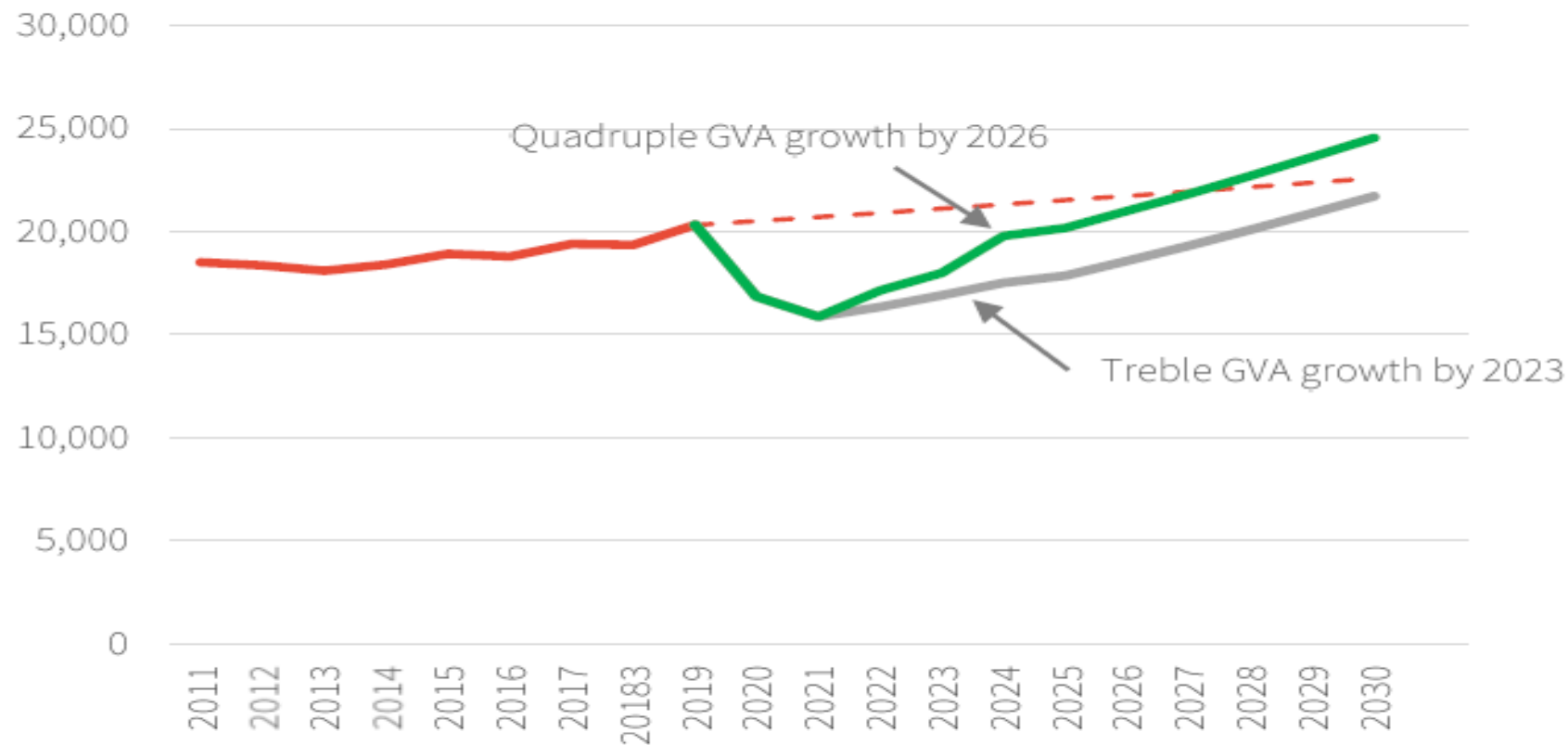
Humber Business Base's Cash Reserve

(% of businesses in sector)



Source: ONS Business Impact of COVID-19 Survey (BICS) Wave 8, ONS Business Counts, Hatch Analysis

Humber LEP GVA COVID Recovery Scenarios (£mns in 2020 prices)



- Historic GVA Current Prices
- Projected Historic GVA Current Prices
- COVID Recovery Scenario A
- COVID Recovery Scenario B

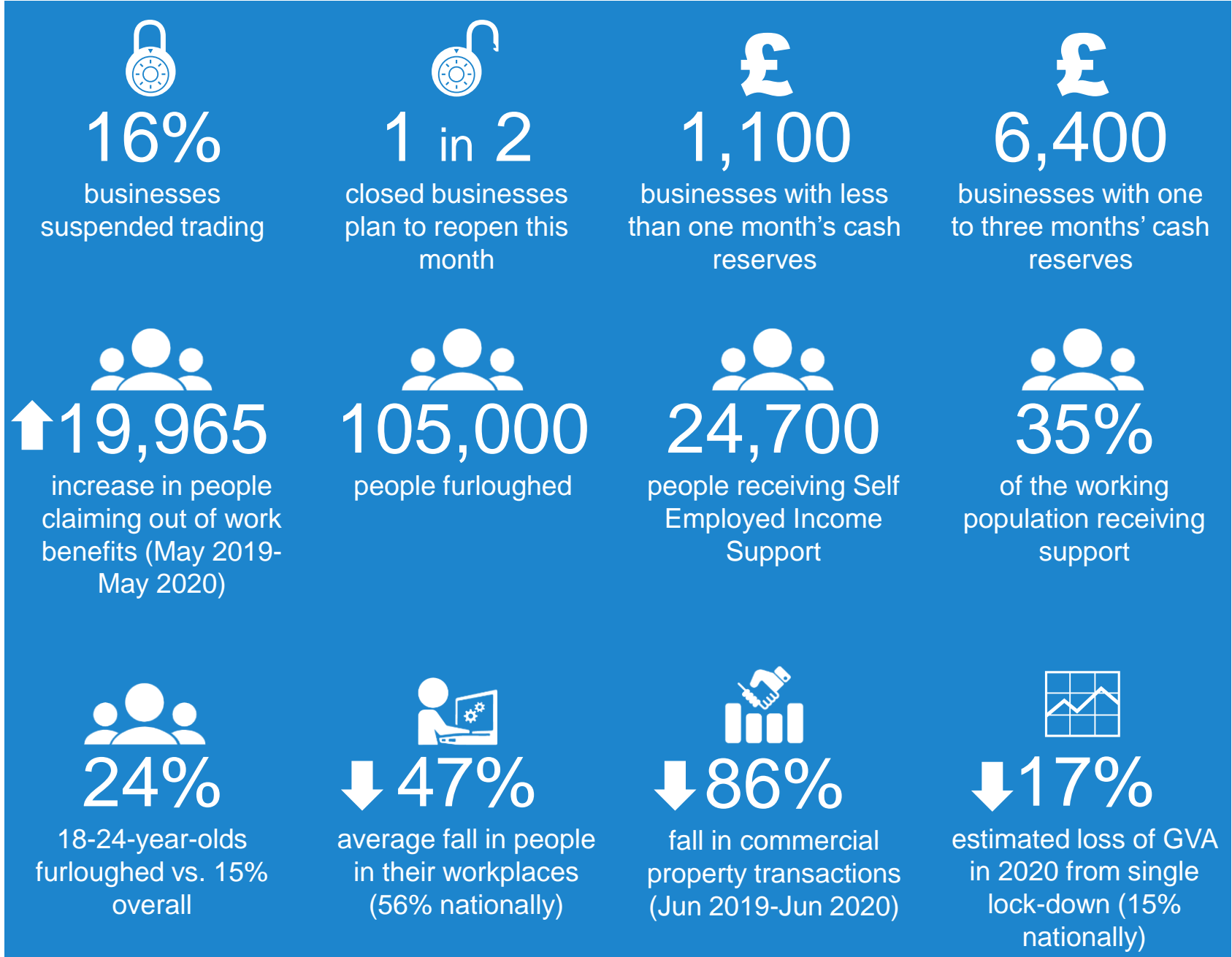
The coronavirus pandemic has had an unprecedented impact on economies around the world.

While the initial economic impact on the Humber of the UK-wide lockdown that began on 23 March is now becoming clearer, its implications will be felt for years to come.

The Humber's critical industries – including the ports, energy generation, oil refining, chemicals production, agriculture and food manufacturing – operated throughout lockdown, serving the nation with power, food and essential goods.

So too did businesses providing essential services such as care, food retail and telecommunications, and many other businesses found a way to adapt to keep trading, whether by implementing social distancing in factories or introducing homeworking on a scale never seen before.

However, a great many businesses were forced to temporarily close, and across the Humber over 105,000 people were placed on furlough.



Objective: To ensure businesses can access the guidance and support required to reopen/continue trading in the next phase, and to make necessary adjustments to ensure their longer term viability

Issues to address	How the LEP will add value		
<ul style="list-style-type: none"> • Social distancing impact • Lower & uncertain demand • Liquidity • Supply chain disruption • Redundancies 	Existing delivery	New delivery	Future options
	<ul style="list-style-type: none"> • Comms to raise awareness of guidance and support • 1:1 Growth Hub advice • Growth Hub #GrowMySME webinar programme • Growth Hub #GrowMySME grants for consultancy • Humber Jobs Fuse – recruitment/redundancy support • Supply Chain Network (part-funded by Growth Hub) • Regulator engagement through BBfA Humber 	Starting in 2020/21	<ul style="list-style-type: none"> • Some sectors may take longer to recover – advocate extended/bespoke support • Ongoing exploration of supply chain development and innovation opportunities
Partner delivery		<ul style="list-style-type: none"> • Additional consultancy grants to be delivered through the Growth Hub** • Additional Growth Hub support for the visitor economy** • Modification of Humber High Street Challenge Fund to support city/town centre adaptation • Expansion of Growing the Humber with greater flexibility to support productivity improvements (£1.5m for 18 months)* HEY 	
<ul style="list-style-type: none"> • Business intelligence and comms led by HERG • Range of Government-backed financial support • Range of membership organisation services • Local authority grants, advisors and city/town centre reopening plans 			

Objective: To encourage and support the increased creation of new businesses, and provide ongoing support for start-ups to improve longer term survival rates

Issues to address	How the LEP will add value			
<ul style="list-style-type: none"> • Lower than average start-up, scale-up and survival rates in the Humber • Likely increased interest in starting businesses • Shortage of start-up support in some areas 	Existing delivery	New delivery	Future options	
	<ul style="list-style-type: none"> • Resources on Growth Hub website • Start-up support not currently eligible under Growth Hub contracts 	Starting in 2020/21	<ul style="list-style-type: none"> • New Growth Hub start-up advisors (4)* • Programme of start-up webinars and peer support sessions* • Start-up toolkits and digital resources* • Marketing campaign to encourage start-ups • Promotion of new start-ups in partnership with media 	<ul style="list-style-type: none"> • Partnership to provide a “welcome package” for new businesses • Partnership to promote entrepreneurship and entrepreneurial skills at all ages • Partnership approach to graduate enterprise • How to identify and proactively support potential high-growth start-ups
	Partner delivery		2021+	
<ul style="list-style-type: none"> • Advisors in some local authorities, e-Factor & Sirius • Start-up Loans & support (Acorn Fund, BEF) • New Enterprise Allowance (DWP) • Peer support (FEO) 		<ul style="list-style-type: none"> • Continue the above if funding is available 		

Objective: To ensure Humber SMEs can access impartial business advice and appropriate funding options to support their growth and productivity

Issues to address	How the LEP will add value		
<ul style="list-style-type: none"> Existing lower than average growth rates Limited take-up of alternative finance Limited availability of support for productivity improvements 	Existing delivery	New delivery	Future options
	<ul style="list-style-type: none"> Core Growth Hub advice and signposting service (advisors (4) and website) Growth Hub #GrowMySME programmes (business growth, finance & ICT) – general & specialist advisors, workshops, grants and sector development – funded until 2021/22 	<p>Starting in 2020/21</p> <ul style="list-style-type: none"> Peer to peer productivity programme pilot** Expansion of Growing the Humber with greater flexibility to support productivity improvements (£1.5m for 18 months)* HEY 	<ul style="list-style-type: none"> Potential to explore alternative funding structures and sources in the future
	<p>Partner delivery</p>	<p>2021+</p>	
<ul style="list-style-type: none"> Advisors in local authorities, e-Factor & Sirius Range of support available from membership organisations, consultants & Government agencies Northern Powerhouse Investment Fund 	<ul style="list-style-type: none"> Renewal of core Growth Hub capacity** Planned extension of #GrowMySME business growth and finance programmes to June 2023* Additional business space* 		

Objective: To support Humber SMEs to upskill, reskill and expand their workforces

Issues to address	How the LEP will add value			
<ul style="list-style-type: none"> • Lower than average skills levels in the region • Need for upskilling to support digitalisation and productivity improvements • Likely displacement of workers in the recession • Leadership & management skills gap 	Existing delivery	New delivery	Future options	
	<ul style="list-style-type: none"> • Humber Jobs Fuse – support to promote vacancies and respond to redundancies • Skills Support for the Workforce (SSW) Programme – fully funded upskilling training and development (funded by Humber ESF) 	Starting in 2020/21		<ul style="list-style-type: none"> • Devolution could provide additional resources and greater flexibility over how budgets are used to support upskilling and reskilling • Many existing SME programmes are ESF-funded, so their continuation/replacement will depend on the successor to European funds
		<ul style="list-style-type: none"> • New Growth Hub workforce development advisor* • Funding secured for Leadership & Management, Digital and 50+ skills support (ESF open calls live) • 50% expansion of existing SSW contract 		
<p>Partner delivery</p> <ul style="list-style-type: none"> • Range of commercial training services available 		2021+		
		<ul style="list-style-type: none"> • Extension of Growth Hub workforce development advisor role* 		

Objective: To support large businesses to grow, reinvest and recruit, and to encourage the development of local supply chains

Issues to address	How the LEP will add value		
<ul style="list-style-type: none"> Exposure to global decisions and Brexit impact Skills shortages, recruitment issues and reduction in apprenticeships 	Existing delivery	New delivery	Future options
	<p>Partner delivery</p> <ul style="list-style-type: none"> Local authority key account management Bespoke training and recruitment response to major investments 	<ul style="list-style-type: none"> Relationship approach Business Loan Fund Humber Jobs Fuse – support to promote vacancies and respond to redundancies Humber Enterprise Zone incentives Single Conversation approach to planning on major developments Supply Chain Network 	<p>Starting in 2020/21</p> <ul style="list-style-type: none"> Additional Key Account Management capacity for foreign-owned businesses New Growth Hub advisor* New Growth Hub workforce development advisor* <p>2021+</p> <ul style="list-style-type: none"> Extension of the above*

Objective: To support people in work to progress, upskill and retrain where necessary to maximise the current and future workforce

Issues to address	How the LEP will add value		
<ul style="list-style-type: none"> • Low skills levels and low pay levels of Humber workforce in comparison to national data • Recruitment challenges to fill new roles • Unspent Apprenticeship Levy 	Existing delivery	New delivery	Future options
	<ul style="list-style-type: none"> • SAP data analysis and workshops provided to influence skills provision, linking to growth sectors • Current ESF programmes e.g. SSW 	Starting in 2020/21	<ul style="list-style-type: none"> • Apprenticeship/T Level matching service to maximise levy funding • Potential delivery of the Mid-life MOT pilot 2 • Use of UKSPF to address new training needs • Potential funding for mental health support for individuals/employers
		<ul style="list-style-type: none"> • Funding secured for Leadership & Management, Digital and 50+ skills support (ESF open calls live) 	
Partner delivery	<ul style="list-style-type: none"> • T level roll out from Sept 2020 • Institute of Technology – new level four provision • Higher and Degree level apprenticeships delivery • National Re-training scheme – pilot areas 		

Objective: To support those looking for work by minimising individuals’ gaps in employment, upskilling longer term benefit claimants and encouraging employers to consider a more diverse workforce

Issues to address	How the LEP will add value		
<ul style="list-style-type: none"> Rise in unemployment, including youth unemployment ESA, people with disabilities, health conditions and other disadvantaged groups Low skills levels of some communities Digital exclusion, skills and confidence 	Existing delivery	New delivery	Future options
	<p>Partner delivery</p> <ul style="list-style-type: none"> JCP programmes - Flexible Support Fund, New Enterprise Allowance, Sector-based Work Academies, Work and Health Programme and Youth Hubs NCS adult career advice Kickstart, apprenticeship and traineeship employer subsidies 	<ul style="list-style-type: none"> CEC careers programmes, linking careers to Humber sectors for young people entering the workforce this year, supporting high quality careers education ESF current programmes e.g. YEI, Springboard & SSW Humber Jobs Fuse – careers advice/promotion of vacancies Local Digital Skills Partnership pilot 	<p>Starting in 2020/21</p> <ul style="list-style-type: none"> Funding secured for Leadership & Management, Digital and 50+ skills support (ESF open calls live) New Growth Hub workforce development advisor will help to promote apprenticeships, traineeships subsidies and T levels*

Objective: To maximise the education and skills levels of people in education or training to support people into good jobs with positive career prospects

Issues to address	How the LEP will add value		
<ul style="list-style-type: none"> GCSE English and Maths achievement levels low No of Humber people qualified to Level 4+ Employers understanding/use of Apprenticeship Levy 	Existing delivery	New delivery	Future options
	<p>Partner delivery</p> <ul style="list-style-type: none"> Institute of Technology Range of higher and degree level apprenticeships Employer subsidies for apprenticeships and traineeships 	<ul style="list-style-type: none"> Apprenticeship Working Group seeking Government policy flexibilities CEC work to raise awareness of Humber sectoral opportunities (to 2021) Growth Deal Skills Capital Programme 	<p>Starting in 2020/21</p> <ul style="list-style-type: none"> New Growth Hub workforce development advisor (apprenticeships, traineeships and T levels) Work Experience – increasing capacity of SMEs to provide placements for schools and colleges (ESF in appraisal, potentially to start Autumn 2020/21)*

Objective: To secure commitments to infrastructure projects in the Humber to ensure that the construction industry continue to recover and the infrastructure upgrade is secured.

Issues to address	How the LEP will add value		
<ul style="list-style-type: none"> Ensuring the projects currently in receipt of Humber LEP financial support are able to complete delivery and achieve positive outcomes for the Humber Economy during and after Covid 19. Partners continue to commit to partner delivery These projects are being delivered within a partnership model often between public and private sector partners. DFT/LA's 	Existing delivery	New delivery	Future options
	<p>The following projects are currently in delivery:</p> <ul style="list-style-type: none"> Road improvements on the Stoneferry Road corridor and Priory Park in Hull Road infrastructure improvements to open up land on Brough Enterprise Zone. Road Improvements on M180 Flood defence improvements on River Hull New housing in Hull and regeneration activity in Grimsby and Scunthorpe 	<p>Starting in 2020/21</p> <ul style="list-style-type: none"> New delivery will be funnelled through new funding sources including Get Britain Building Fund (see next slide) DFT funded schemes 	<ul style="list-style-type: none"> Overview and support available from the Investment & Regulation Board and Single Conversation Group of the LEP. Feasibility funding has been allocated to Ferriby/ Melton Parkway station to continue feasibility work. Support EA Strategy

Objective: To develop and deliver new economic Infrastructure projects to kick start the post Covid economy in the Humber

Issues to address	How the LEP will add value		
<ul style="list-style-type: none"> To ensure ongoing infrastructure investment is secured for the region. Key infrastructure barriers to growth in the Humber Economy are overcome. 	Existing delivery	New delivery	Future options
	<p>Partner delivery</p> <ul style="list-style-type: none"> These projects will be delivered within a partnership model often between public and private sector partners. 	<p>Existing delivery will be undertaken via Growing the Humber (see previous slide)</p> <p>EA schemes</p> <p>DFT schemes</p> <p>Influence TFN</p> <p>Housing Programme</p>	<p>Starting in 2020/21</p> <p>£13.4m has been allocated to the Humber (North Bank) for shovel ready projects.</p> <p>A business case to government has been prepared which includes a range of projects including;</p> <ul style="list-style-type: none"> Rail Innovation and Business Centre for Goole and Business Centre for Beverley & North Hull Cycling schemes Hull Housing Scheme Highway resilience improvements

Below are some of the priority wider actions we are taking in 2020/21 to support the foundations of growing the Humber economy, as outlined in the draft Humber Local Industrial Strategy.

Ideas	<ul style="list-style-type: none"> Supporting the Spark Fund, Aura Innovation Centre and Flood Innovation Centre delivered by the University of Hull through the Humber ERDF programme
People	<ul style="list-style-type: none"> Growth Deal investment in new training facilities for construction, engineering, process industries and energy <i>Additional actions to be added</i>
Infrastructure	<ul style="list-style-type: none"> Growth Deal investment in road improvements on the Stoneferry Road corridor and Priory Park in Hull; to open up land on the Brough Enterprise Zone; and on the A180 Growth Deal investment in flood defences on the River Hull First stage feasibility study into a new parkway station between North Ferriby and Brough

Business Environment

- Ongoing delivery of the Humber Business Growth Hub, Growing the Humber grant programme and Business Loan Fund
- Growth Deal investment in new business space in North East Lincolnshire
- Support for a range of business support activities and the Northern Powerhouse Investment Fund through the Humber ERDF programme
- Partnership work with regulators and planning authorities through Better Business for All Humber and the Single Conversation

Places

- Growth Deal investment in priority city and town centre locations through the Humber High Street Challenge
- Growth Deal investment to enable new housing in Hull
- Growth Deal investment in Grimsby and Cleethorpes regeneration projects
- Working with local authorities to support Town Deal proposals for Grimsby, Scunthorpe and Goole